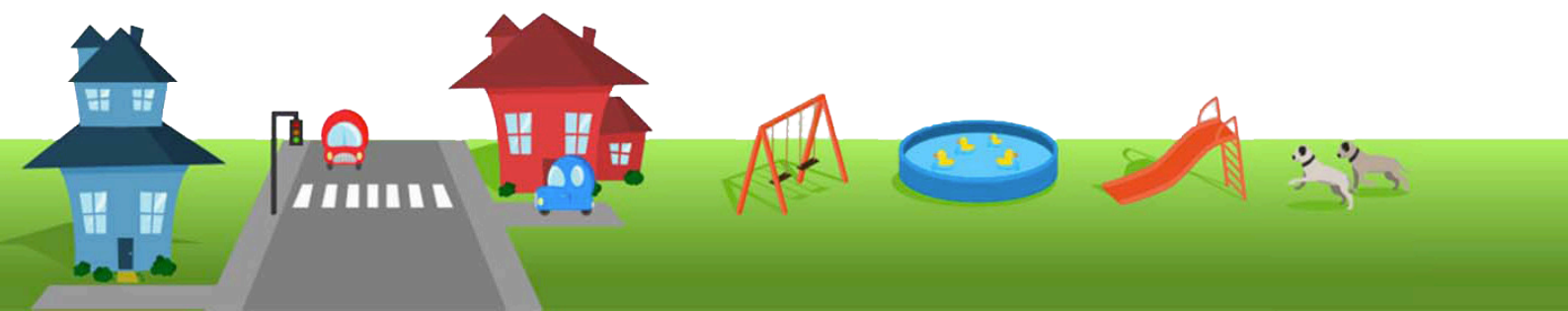


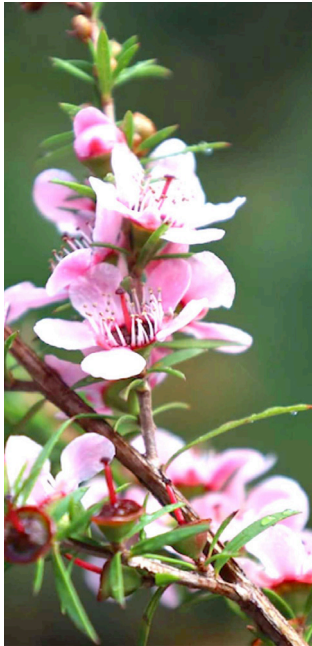
News from Kidsafe Tasmania Spring 2023

INSIDE:

- Spring message from the CEO
- Dangers of Button Batteries
- New Road Safety Education Clips
- Child Restaint checking available
- Grow me safely - prevention of garden injury
- These plants can kill
- Unintentional burns and first aid
- Directory of our website and services



CEO'S SPRING MESSAGE



Spring is in the air and its early. We are being given early warnings of a hot summer and potential high fire danger - all things that impact on us and our families as we negotiate hotter weather.

So, let's be prepared. Kidsafe Tasmania is here to support you with some useful tips and resources.

Spring is a time to get in the garden, tidy up the house and clean out those old toys, spend time together and enjoy more time outside.

You might feel like going on a Sunday drive or visiting friends, so let's be prepared and having a safe and happy time together.

Regards Jenny



Enquiries: Jenny Branch-Allen
CEO Kidsafe Tasmania
0417 381 721
jenny.branchallen@gmail.com



REMINDER ABOUT THE DANGERS OF BUTTON BATTERIES

In Australia, around 20 children a week present to an emergency department with a button battery related injury - that's over 1,000 children every year.

How to Dispose of Button Batteries

- Put clear packing, masking or electrical tape on the batteries' terminals or sandwich the batteries between two layers of tape (e.g. flat button cells).
- Place these batteries in a container separate from other batteries that don't require being taped.
- Change button batteries on a flat surface, away from children, to avoid them rolling into places children can reach.
- As soon as you have finished using a button battery, put sticky tape around both sides of it.



Checklist

- Have you checked your home for button batteries and items that use them?
- Have you checked that the button battery compartment of all items that use button batteries is tightly secured? Do you store button batteries and items that use them out of the reach of young children? Do you keep hearing aids and batteries separate to any medications or lollies?
- Do you always dispose of batteries immediately and safely?
- Batteries with no charge are still dangerous to children.
- Do you check novelty items and toys such as flashing jewellery/clothes given to your children for button batteries?
- Have you entered the phone number of the Poisons Information Centre into your mobile phone? 13 11 26
- Button batteries are extremely dangerous. Adults can also accidentally them.



www.kidsafetas.com.au



ROAD SAFETY ADVISORY COUNCIL
TOWARDS ZERO



Tasmanian
Government



EXCITING NEWS FROM KIDSAFE - CHECK OUT OUR NEW ROAD SAFETY EDUCATION CLIPS

CreativiTek have designed 4 amazing augmented reality experiences for Kidsafe Tasmania - to educate children and parents about road safety in a fun way. They need to be played on a PHONE, IPAD or TABLET - as they use your own image on the screen – so the camera needs to be on (facing you) and also the sound needs to be on (there is a mute icon at the top or the screen that can be clicked to turn on the sound).

Click on the link, and the experience will begin – just follow the instructions on the screen.

ADVERTISEMENTS ON BUSES EXPERIENCE

<https://www.facebook.com/fbcameraeffects/tryit/972994490794400/>

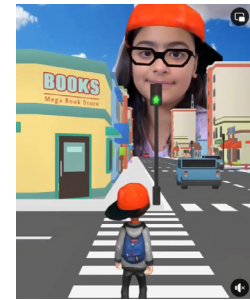
This experience shows 6 different bus advertisements with your face and various road safety messages, you can listen to the messages as they appear on the bus. Just touch the screen to change to the next bus picture. Just follow the instructions on the screen.



GREEN LIGHT/ZEBRA CROSSING GAME EXPERIENCE

<https://www.facebook.com/fbcameraeffects/tryit/1371708040044097/>

This experience shows a pedestrian pathway. Tilt your head left and right to play. A virtual character can see green lights and zebra crossing along the way, and collect items (for example coins or fruits) to win points. You can hear what happens in the game and how to be safe as a pedestrian. Capture a selfie at the end to celebrate what you have learnt.



THE SAFE PLACE TO CROSS THE ROAD EXPERIENCE

<https://www.facebook.com/fbcameraeffects/tryit/958180318806953/>

You will see yourself on the screen wearing a hat with a row of 6 lights. Above the hat you can see images of safe and unsafe places to cross the road. Tilt your head TOWARDS the correct image. If you get it right, a green light comes on. If not, a red light.



STOP, LOOK, LISTEN, AND THINK EXPERIENCE

<https://www.facebook.com/fbcameraeffects/tryit/244270344623503/>

Tap the screen, then copy the actions of the traffic light as they happen on the screen. STOP, LOOK, LISTEN and THINK. A screen shot will be automatically be taken of each – then all 4 will appear on the last screen. A song about “stop, look, listen, and think” will be playing.



These experiences have been added to our Kidsafe Tasmania website and Facebook page.



ROAD SAFETY ADVISORY COUNCIL
TOWARDS ZERO



 Tasmanian
Government



CHILD RESTRAINT CHECKING AVAILABLE

Do not forget we are available to check and fit child restraints. You can have us at your childcare centre, playgroup, or parent group for free checking sessions.

Fittings can be done for a fee.

Contact Pete Gillon: 0407 692 403 Email: pgillon14@gmail.com

CHILD RESTRAINT SAFETY CHECKING



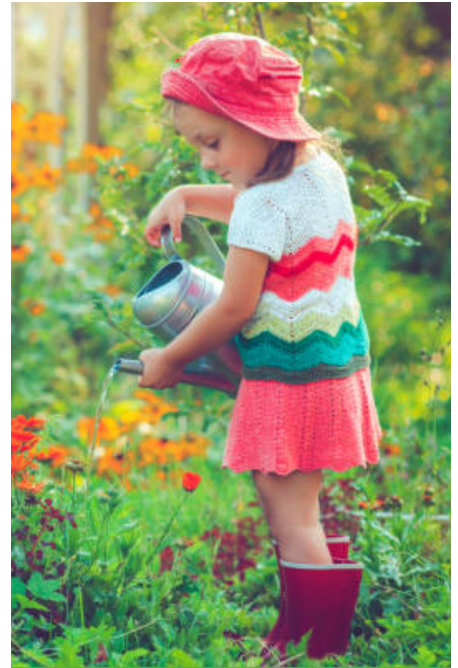
GROW ME SAFELY - SOME PLANTS CAN KILL

Gardening with children is important to build life skills, inspire creativity, grow, and harvest food, role model safe practices and develop a respect for nature. There are plants and weeds that are poisonous, can cause an allergic reaction or are hazardous because of their spikes. Children are at risk because they like to explore and may accidentally touch and taste potentially harmful plants that may be around the home.

PREVENTION OF GARDEN INJURY

Supervising your child is the best way to avoid danger in the garden or anywhere else, but this isn't always possible. This means it's very important to make your garden safe. You can do this by avoiding growing poisonous plants and dangerous plants. Fence off or remove any suspect plants until your child is old enough to learn not to eat strange plants (usually at around the age of three years but children develop at different times).

- Fence off or remove dangerous plants, see our checklist on the next page for a few common poisonous plants that might be around your home
- Before you purchase a plant, check that it is safe
- Teach children from a young age what they can and can't eat from the garden
- Supervise your children in the garden.
- Keep the Poisons Information Centre number 13 11 26 near your phone or program it into the speed dial. They can be called 24 hours, 7 days a week.



FIRST AID

Phone the Poison Information Centre on 13 11 26 – 24 hours, 7 days. If you need to go to Hospital, take a photo or a piece of the plant with you if you can.







If your child is having difficulty breathing, is unconscious or fitting, call an ambulance on 000.

SEE THE FOLLOWING PAGE FOR A LIST OF DANGEROUS PLANTS



THESE PLANTS CAN KILL

Below is just a sample of the poisonous plants that can place a child's life at risk. In cases of suspected poisoning, you can get advice 24 hours a day from the Poisons Information Centre on 13 11 26.

Poisonous Plant	Description	Symptoms	Image
Apple	The leaves of the apple tree and seeds in the fruit itself are dangerous if eaten in large amounts.	Contains the chemical cyanide.	
Arum Lily	All parts of these common white lilies will cause burning in the mouth if eaten. Serious illness is uncommon as the burning prevents large quantities from being consumed.	Burning mouth, skin rash.	
Castor Oil Plant	Only the chewed seeds are dangerous, however 2-3 seeds can cause death.	Burning mouth and throat, bloody diarrhoea 3-36 hours after ingestion. Rapid and feeble pulse, muscular cramps in calves and abdomen and bluish discolouration of skin.	
Daphne	All parts of this common ornamental shrub are poisonous, especially the berries. The fragrant pink and white flowers can be very attractive to children.	Severe vomiting and diarrhoea; burning sensation in mouth and stomach.	
Deadly Nightshade	The round purple/black berries are appealing to children and highly toxic.	Dry throat, thirstiness, palpitations and flushed dry skin.	
Hemlock	Hemlock is a very common plant and all parts are poisonous.	Can cause neuro-muscular block, low blood pressure, heart contraction and unconsciousness leading to death.	
Lily of Valley	All parts of this attractive garden plant are poisonous. The fruit are globular red berries about 12mm in diameter.	Nausea, vomiting, headache, an excessive flow of saliva and eventually heart failure.	
Oleander	All parts of this plant, with flowers ranging from white to pink, apricot and red are poisonous.	Vomiting, stomach pain, blood stained faeces, dizziness, irregular heartbeat and unconsciousness. Death results from heart failure or respiratory paralysis.	
Poinsettia	A popular pot plant with bright red, white or yellow leaves. Has a white milky sap.	The sap can cause extreme irritation to the skin and eyes. All parts are poisonous if eaten and can cause severe vomiting, purging, delirium, and can lead to death.	
Potato	The green skin of this food is highly toxic.	Severe vomiting and diarrhoea.	



UNINTENTIONAL BURNS & FIRST AID

As spring comes along, we start to have burn offs to clear land getting ready for summer. We also may start using outside pit fire sand barbecues. These are places children must be always supervised.

A flame burn occurs when the skin comes into contact with the heat of a flame. We use fire in our everyday lives which makes it a source of attraction for many children, and they are often unaware of the dangers. A cigarette burns at 585°C, a candle at 1000°C, and a bush fire at 2000°C or above, causing significant damage to anything which crosses its path.

Generally, the heat from a flame is enough to warn us to avoid being injured, however if there are the essential elements of oxygen and fuel, fire will be sustained and unpredictable and we may not have the ability to avoid being injured. The action of **'STOP, COVER, DROP AND ROLL'** is advised for anyone whose clothing has caught on fire.

STOP

As fire requires oxygen to burn, stopping any quick movements restricts the flow of air around the flame so it will not burn as fiercely.

COVER

This is using the hands to cover the face and neck. These body areas have very delicate and sensitive skin and soft tissue parts.

Burning to the face in particular can cause horrific scarring and can 'melt away' the soft tissue structure of the nose, ears, lips and eyes.

DROP

Drop to the ground

ROLL

Roll -rolling backwards and forwards in a rocking motion will also restrict the air flow around the flame and will help to 'stamp out' the fire.



WEBSITE

Our website has new insightful information being put up every week, I encourage you to look at it regularly and feedback is always welcome.

We are trying to keep content up to date and relevant to our users. We have uploaded our 2023 information for people who want to book a Kidsafe session during this year.

What you may find useful on www.kidsafetas.com.au

Burns and Fire Awareness

- Home Burns Safety Checklist
- Burns Videos links
- Safety Ninja Burns Safety Clip

Stages in growing up safely

- Antenatal
- Birth to 6 Months
- Six to 12 Months
- One to Three Years
- Three to Five Years

In-Home Safety

- Location in House
- Home Safety Checklist
- These Plants Can Kill
- Weighted Blankets information

Water Safety

- Kids Alive Do the Five

Road Safety

- Child Restraints
- Driveway Safety
- Pedestrian Safety
- Choosing the Right Car Seat

Other safety information

- Top Ten Accidents
- Safe Return to School
- Coronavirus Update
- Playground Safety
- Child Farm Safety

Also

- News - latest child safety updates
- Product Recalls
- News from Kidsafe Australia
- Kids Page
- Events

Resources

- Data sheets - child safety
- Home Safety Actions Kit

